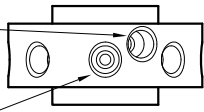
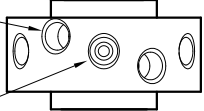
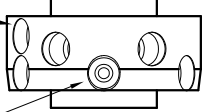
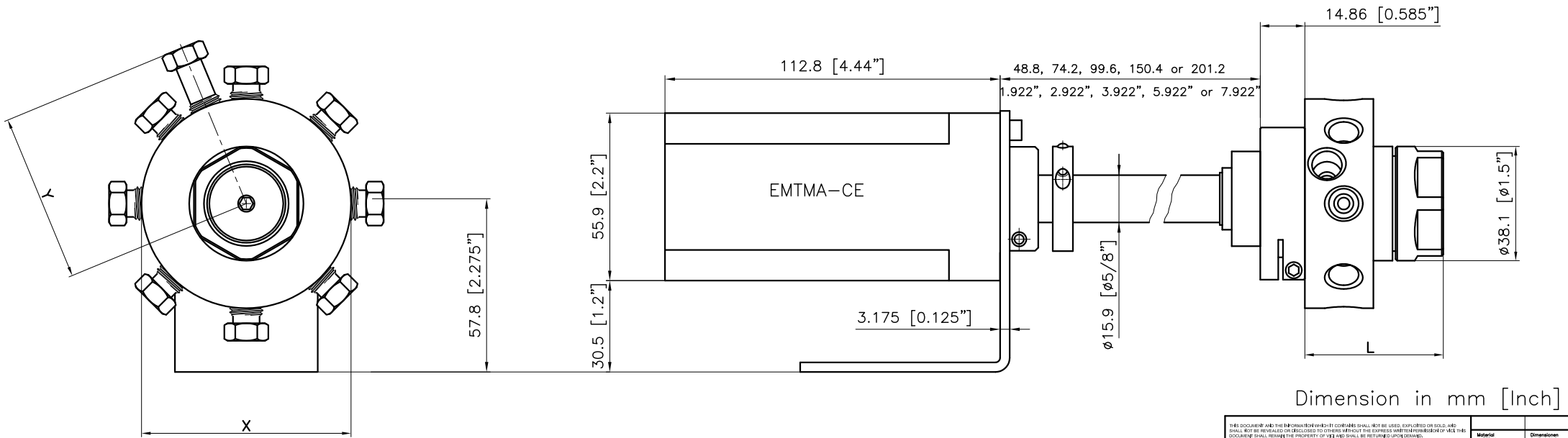



	Valve Type	Connections	No. of Pos.	X		Y		L	
				mm	Inch	mm	Inch	mm	Inch
 <p>ONE OFFSET PORT</p> <p>ONE ROW OF PORTS</p>	VLSD*MW	1/4"	4, 6, 8, 10	ø69.85	ø2.75	~56.2	~2.21	~45	~1.775
 <p>TWO OFFSET PORTS</p> <p>ONE ROW OF PORTS</p>	VLSC*MW	1/4"	4, 6, 8	ø69.85	ø2.75	~56.2	~2.21	~49	~1.925
 <p>ONE OFFSET PORT</p> <p>TWO ROWS OF PORTS</p>	VLSF*MW	1/4"	4, 6, 8	ø69.85	ø2.75	~56.2	~2.21	~49	~1.925



Dimension in mm [Inch]

<small>THIS DOCUMENT AND THE INFORMATION WHICH IT CONTAINS SHALL NOT BE USED, EXPLOITED OR SOLD, AND SHALL NOT BE REPRODUCED OR DISCLOSED TO OTHERS WITHOUT THE EXPRESS WRITTEN PERMISSION OF VICI. THIS DOCUMENTARY SHALL REMAIN THE PROPERTY OF VICI AND SHALL BE RETURNED UPON DEMAND.</small>		<small>Material:</small> <small>PROJECTION:</small>	<small>Dimension:</small> <small>GENERAL TOLERANCES:</small>
<small>Änderungen:</small> <small>DESCRIPTION:</small>		<small>Part No.:</small>	<small>Scale:</small> <small>19.11.2004</small> <small>F.P.</small>
MP-valve, VL, 1/4" Micro electric actuator with standoff. General dimensions		<small>Scale:</small> <small>1.5:1</small>	<small>Scale:</small> <small>19.11.2004</small> <small>F.Co</small>
<small>Dimension:</small> <small>SUB CODE:</small>		<small>Scale:</small> <small>506047.DWG</small>	<small>Scale:</small> <small>KUNDE</small>
 <small>VICI AG International, CH-6214 Schenkon</small>		<small>Zeichnung Nr. / DRAWING NO.</small> 1-GE-5060.47	