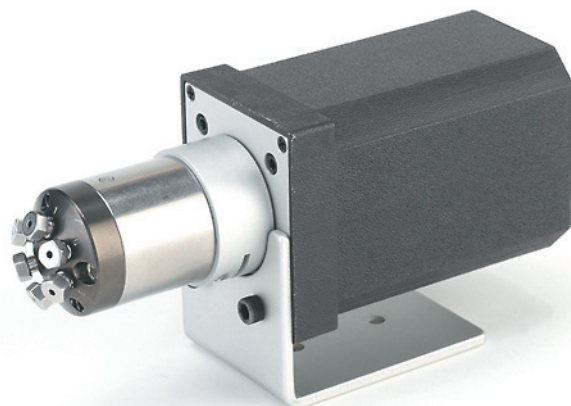


Model C82 High Pressure UHPLC Injector

- Rated to 10,000, 15,000, or 20,000 psi
- 1/32" or 1/16" fittings
- Works with all VICI actuation options
- 4, 6, 8, and 10 port models



Many of the latest analytical techniques require systems capable of pressures up to 10,000, 15,000, or even 20,000 psi. The C82 series injectors from Cheminert feature a proprietary rotor material and stator coating that permit these pressures. C82 injectors are available in a variety of configurations, including some models with a vertical injection port. (Consult the factory for more information.)

Actuation

The injectors use the same mounting system as the widely used Cheminert C2 series HPLC injectors. Our microelectric actuator determines accurate positioning without limit switches or customer adjustment. Computer control is facilitated via RS-232 or RS-485 interface, but it can also be controlled manually. The actuator is CE-certified, and includes an autosensing 110/230 VAC to 24 VDC universal power supply.

Specifications

Max. operating pressure	10,000, 15,000, or 20,000 psi
Configurations available	4, 6, 8, and 10 port; 1/32" and 1/16" fittings
Bore size	100, 150, or 250 micron for 1/32" fittings 150 or 250 micron for 1/16" fittings (400 micron in some configurations)
Stator material	Stainless steel with inert coating
Rotor material	Special high-strength PAEK (Valcon E5)
Microelectric actuator automation options	RS-232, RS-485 (optional), contact closure, TTL logic level signals

North America, South America, and Australia/Oceania contact:

VICI® Valco Instruments Co. Inc.
tel: 800 367-8424
fax: 713 688-8106
valco@vici.com

Europe, Asia, and Africa contact:

VICI® VICI AG International
tel: Int + 41 41 925-6200
fax: Int + 41 41 925-6201
info@vici.ch



Rev 12/19

VICI® and Cheminert® are registered trademarks of Valco Instruments Co. Inc. and VICI AG

1/32" fittings

	4 Port	6 Port	8 Port	10 port	10,000 psi
<i>100 micron bore</i>					
Manual	C82NH-4574	C82NH-4576	C82NH-4578	C82NH-4570	
Actuated	C82NH-4574EUH	C82NH-4576EUH	C82NH-4578EUD	C82NH-4570EUD	
<i>150 micron bore</i>					
Manual	C82NH-6574	C82NH-6576	C82NH-6578	C82NH-6570	
Actuated	C82NH-6574EUH	C82NH-6576EUH	C82NH-6578EUD	C82NH-6570EUD	
<i>250 micron bore</i>					
Manual	C82NH-1574	C82NH-1576	C82NH-1578	C82NH-1570	
Actuated	C82NH-1574EUH	C82NH-1576EUH	C82NH-1578EUD	C82NH-1570EUD	
<hr/>					
					15,000 psi
<i>100 micron bore</i>					
Manual	C82NX-4574	C82NX-4576	C82NX-4578	C82NX-4570	
Actuated	C82NX-4574EUH	C82NX-4576EUH	C82NX-4578EUD	C82NX-4570EUD	
<i>150 micron bore</i>					
Manual	C82NX-6574	C82NX-6576	C82NX-6578	C82NX-6570	
Actuated	C82NX-6574EUH	C82NX-6576EUH	C82NX-6578EUD	C82NX-6570EUD	
<i>250 micron bore</i>					
Manual	C82NX-1574	C82NX-1576	C82NX-1578	C82NX-1570	
Actuated	C82NX-1574EUH	C82NX-1576EUH	C82NX-1578EUD	C82NX-1570EUD	
<hr/>					
					20,000 psi
<i>100 micron bore</i>					
Manual	C82NU-4674	C82NU-4676			
Actuated	C82NU-4674EH	C82NU-4676EH			
<i>150 micron bore</i>					
Manual	C82NU-6674	C82NU-6676			
Actuated	C82NU-6674EH	C82NU-6676EH			
<i>250 micron bore</i>					
Manual	C82NU-1674	C82NU-1676			
Actuated	C82NU-1674EH	C82NU-1676EH			

1/16" fittings

	4 Port	6 Port	8 Port	10 port	10,000 psi
<i>150 micron bore</i>					
Manual	C82H-6574	C82H-6576	C82H-6578	C82H-6570	
Actuated	C82H-6574EUH	C82H-6576EUH	C82H-6578EUD	C82H-6570EUD	
<i>250 micron bore</i>					
Manual	C82H-1574	C82H-1576	C82H-1578	C82H-1570	
Actuated	C82H-1574EUH	C82H-1576EUH	C82H-1578EUD	C82H-1570EUD	
<hr/>					
					15,000 psi
<i>150 micron bore</i>					
Manual	C82X-6574	C82X-6576	C82X-6578	C82X-6570	
Actuated	C82X-6574EUH	C82X-6576EUH	C82X-6578EUD	C82X-6570EUD	
<i>250 micron bore</i>					
Manual	C82X-1574	C82X-1576	C82X-1578	C82X-1570	
Actuated	C82X-1574EUH	C82X-1576EUH	C82X-1578EUD	C82X-1570EUD	
<hr/>					
					20,000 psi
<i>150 micron bore</i>					
Manual	C82U-6674	C82U-6676			
Actuated	C82U-6674EUD	C82U-6676EUD			
<i>250 micron bore</i>					
Manual	C82U-1674	C82U-1676			
Actuated	C82U-1674EUD	C82U-1676EUD			