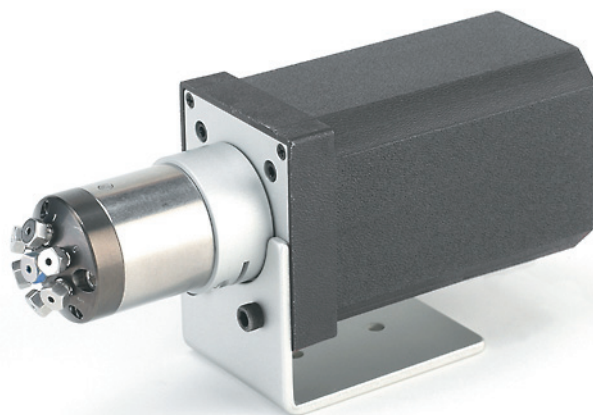


Model C85 High Pressure UHPLC Column Selector

- Rated to 10,000, 15,000, or 20,000 psi
- 1/32" or 1/16" fittings
- Works with all VICI actuation options
- 4, 6, 8, and 10 position models

Many of the latest analytical techniques require systems capable of pressures up to 10,000, 15,000, or even 20,000 psi. Model C85 column selectors from Cheminert feature a proprietary rotor material and stator coating that permit these pressures.



Actuation

These stream or column selectors use the same mounting system as the widely used Cheminert C5 series HPLC stream selectors. Our microelectric actuator determines accurate positioning without limit switches or customer adjustment. Computer control is facilitated via RS-232 or RS-485 interface, but it can also be controlled manually. The actuator is CE-certified, and includes an autosensing 110/230 VAC to 24 VDC universal power supply.

Specifications

Max. operating pressure	10,000, 15,000, or 20,000 psi
Configurations available	4, 6, 8, and 10 position 1/32" and 1/16" fittings
Bore size	100, 150, or 250 micron for 1/32" fittings 150 or 250 micron for 1/16" fittings (400 micron in some configurations)
Stator material	Stainless steel with inert coating
Rotor material	Special high-strength PAEK (Valcon E5)
Microelectric actuator automation options	RS-232, RS-485 (optional), contact closure, TTL logic level signals

North America, South America, and Australia/Oceania contact:

VICI® Valco Instruments Co. Inc.
tel: 800 367-8424
fax: 713 688-8106
valco@vici.com

Europe, Asia, and Africa contact:

VICI® VICI AG International
tel: Int + 41 41 925-6200
fax: Int + 41 41 925-6201
info@vici.ch

Rev 12/19

VICI® and Cheminert®
are registered trademarks of
Valco Instruments Co. Inc. and VICI AG

1/32" fittings

	4 Position	6 Position	8 Position	10 position	10,000 psi
<i>100 micron bore</i>					
Actuated	C85NH-4574EUH	C85NH-4576EUH	C85NH-4578EUT	C85NH-4570EUT	
Valve only	C85NH-4574D	C85NH-4576D	C85NH-4578D	C85NH-4570D	
<i>150 micron bore</i>					
Actuated	C85NH-6574EUH	C85NH-6576EUH	C85NH-6578EUT	C85NH-6570EUT	
Valve only	C85NH-6574D	C85NH-6576D	C85NH-6578D	C85NH-6570D	
<i>250 micron bore</i>					
Actuated	C85NH-1574EUH	C85NH-1576EUH	C85NH-1578EUT	C85NH-1570EUT	
Valve only	C85NH-1574D	C85NH-1576D	C85NH-1578D	C85NH-1570D	
<hr/>					
<i>100 micron bore</i>					
Actuated	C85NX-4574EUH	C85NX-4576EUH	C85NX-4578EUT	C85NX-4570EUT	15,000 psi
Valve only	C85NX-4574D	C85NX-4576D	C85NX-4578D	C85NX-4570D	
<i>150 micron bore</i>					
Actuated	C85NX-6574EUH	C85NX-6576EUH	C85NX-6578EUT	C85NX-6570EUT	
Valve only	C85NX-6574D	C85NX-6576D	C85NX-6578D	C85NX-6570D	
<i>250 micron bore</i>					
Actuated	C85NX-1574EUH	C85NX-1576EUH	C85NX-1578EUT	C85NX-1570EUT	
Valve only	C85NX-1574D	C85NX-1576D	C85NX-1578D	C85NX-1570D	
<hr/>					
<i>100 micron bore</i>					
Actuated	C85NU-4574EUH	C85NU-4576EUH			20,000 psi
Valve only	C85NU-4574D	C85NU-4576D			
<i>150 micron bore</i>					
Actuated	C85NU-6574EUH	C85NU-6576EUH			
Valve only	C85NU-6574D	C85NU-6576D			
<i>250 micron bore</i>					
Actuated	C85NU-1574EUH	C85NU-1576EUH			
Valve only	C85NU-1574D	C85NU-1576D			

1/16" fittings

	4 Position	6 Position	8 Position	10 position	10,000 psi
<i>150 micron bore</i>					
Actuated	C85H-6574EUH	C85H-6576EUH	C85H-6578EUT	C85H-6570EUT	
Valve only	C85H-6574D	C85H-6576D	C85H-6578D	C85H-6570D	
<i>250 micron bore</i>					
Actuated	C85H-1574EUH	C85H-1576EUH	C85H-1578EUT	C85H-1570EUT	
Valve only	C85H-1574D	C85H-1576D	C85H-1578D	C85H-1570D	
<hr/>					
<i>150 micron bore</i>					
Actuated	C85X-6574EUH	C85X-6576EUH	C85X-6578EUT	C85X-6570EUT	15,000 psi
Valve only	C85X-6574D	C85X-6576D	C85X-6578D	C85X-6570D	
<i>250 micron bore</i>					
Actuated	C85X-1574EUH	C85X-1576EUH	C85X-1578EUT	C85X-1570EUT	
Valve only	C85X-1574D	C85X-1576D	C85X-1578D	C85X-1570D	
<hr/>					
<i>150 micron bore</i>					
Actuated	C85U-6574EUT	C85U-6576EUT			20,000 psi
Valve only	C85U-6574D	C85U-6576D			
<i>250 micron bore</i>					
Actuated	C85U-1574EUT	C85U-1576EUT			
Valve only	C85U-1574D	C85U-1576D			