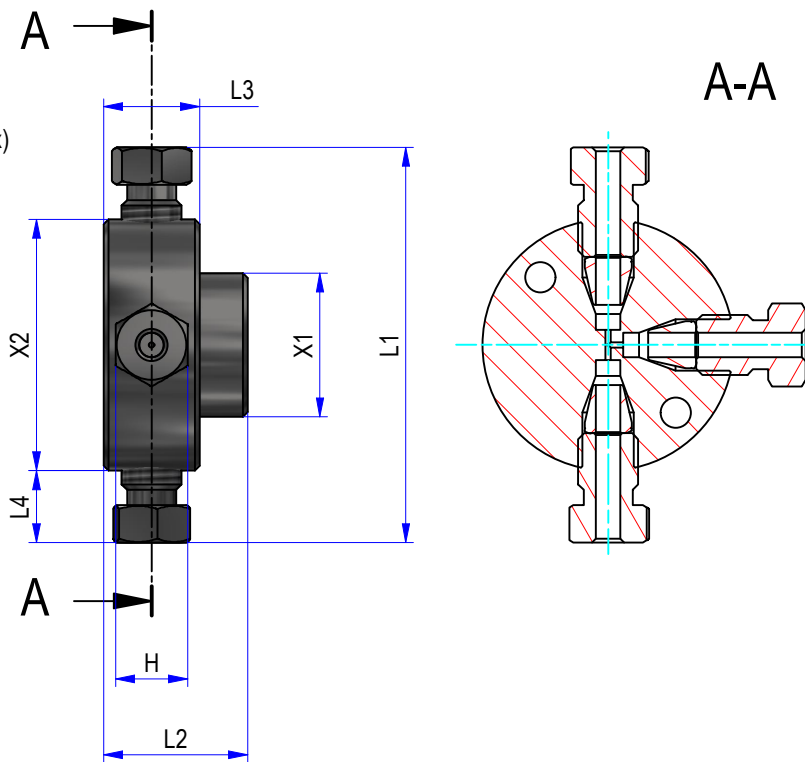


SHOWN ZT2



\* different bores / different materials

Dimension in mm [Inch]

Part#	Description	L1	L2	L3	L4	X1	X2	H
ZT.5*	Tee, ZDV: 1/32"	~27.3 mm [~1.070"]	9.53 mm [0.375"]	4.77 mm [0.188"]	~4.5 mm [~0.175"]	Ø15.88 mm [Ø0.625"]	Ø18.29 [Ø0.720"]	4.76 mm Hex [3/16" Hex]
ZT1*	Tee, ZDV: 1/16"	~39.3 mm [~1.546"]	12.7 mm [0.500"]	6.35 mm [0.250"]	~8.0 mm [~0.313"]	Ø19.05 mm [Ø0.750"]	Ø23.37 [Ø0.920"]	6.35 mm Hex [1/4" Hex]
ZT2*	Tee, ZDV: 1/8"	~52.7 mm [~2.076"]	19.05 mm [0.750"]	12.7 mm [0.500"]	~9.7 mm [~0.383"]	Ø19.05 mm [Ø0.750"]	Ø33.27 [Ø1.310"]	9.53 mm Hex [3/8" Hex]
ZT4*	Tee, ZDV: 1/4"	~66.0 mm [~2.600"]	20.63 mm [0.812"]	14.28 mm [0.562"]	~10.8 mm [~0.425"]	Ø19.05 mm [Ø0.750"]	Ø44.45 [Ø1.750"]	12.7 mm Hex [1/2" Hex]

MODIFICATIONS:	REV.:	DATE :	INITIATED:	ECN / DESCRIPTION :	MATERIAL:
PART NO.:					SURFACE:
Tees, metal	WEIGHT:	SCALE:	FORMAT:		
		1 : 1	A4		
	CREATED:	15.12.2005	F.P.		
	CHECKED:	15.12.2005	FCo		
General dimensions	RELEASED:	15.12.2005	FCo		

<b>VICI</b> VICI AG International CH-6214 Schenkon	PROJECTION:		CATEGORY: General-Dimensions
	DRAWING NO.:	4 - GE - 5060.59	INDEX:
THIS DOCUMENT AND THE INFORMATION WHICH IT CONTAINS SHALL NOT BE USED, EXPLOITED OR SOLD, AND SHALL NOT BE REVEALED OR DISCLOSED TO OTHERS WITHOUT THE EXPRESS WRITTEN PERMISSION OF VICI. THIS DOCUMENT SHALL REMAIN THE PROPERTY OF VICI AND SHALL BE RETURNED UPON DEMAND.			SHEET: 1 / 1