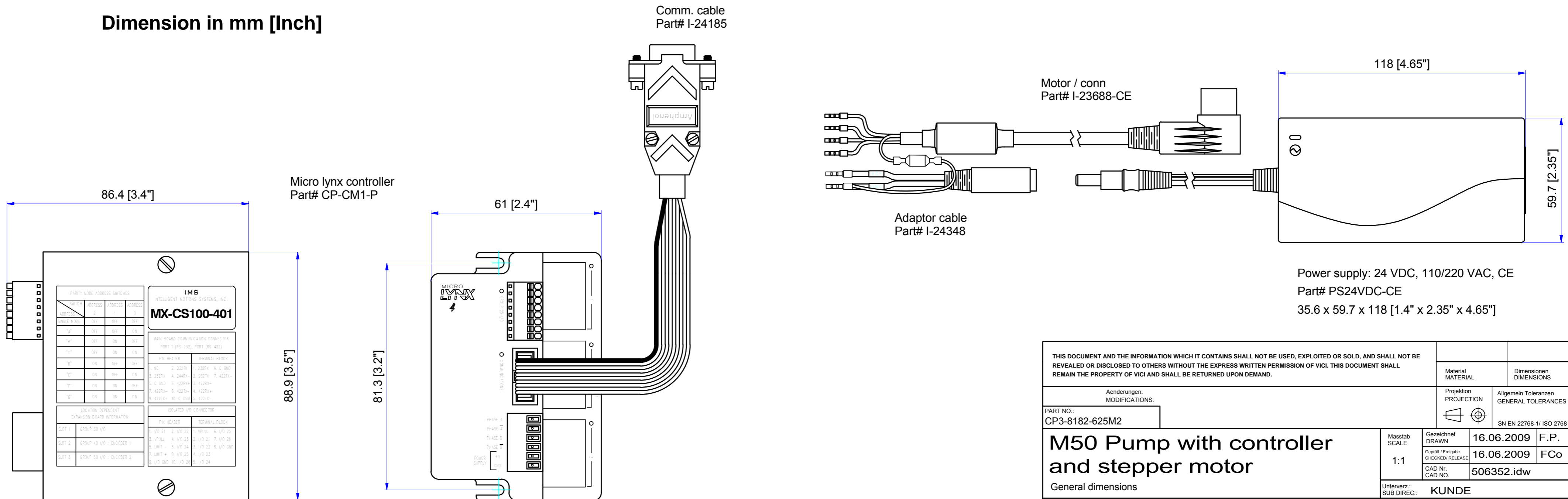


**Dimension in mm [Inch]**



THIS DOCUMENT AND THE INFORMATION WHICH IT CONTAINS SHALL NOT BE USED, EXPLOITED OR SOLD, AND SHALL NOT BE REVEALED OR DISCLOSED TO OTHERS WITHOUT THE EXPRESS WRITTEN PERMISSION OF VICI. THIS DOCUMENT SHALL REMAIN THE PROPERTY OF VICI AND SHALL BE RETURNED UPON DEMAND.		Material MATERIAL	Dimensionen DIMENSIONS
Aenderungen: MODIFICATIONS:		Projektion PROJECTION	Allgemein Toleranzen GENERAL TOLERANCES
PART NO.: CP3-8182-625M2		Gezeichnet DRAWN: 16.06.2009	F.P.
<b>M50 Pump with controller and stepper motor</b>		Geprüft / Freigebe CHECKED/RELEASE: 16.06.2009	FCo
General dimensions		CAD Nr. CAD NO.: 506352.idw	
SUB DIREC.: KUNDE		Unterverz.: Zeichnungs Nr. / DRAWING NO.	
VICI® VICI AG International, CH-6214 Schenkon		<b>2 - GE - 5063.52</b>	