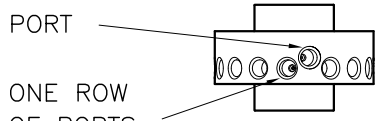
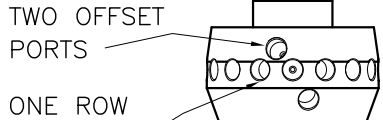
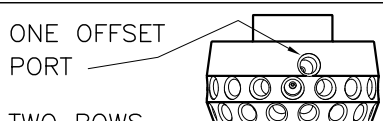

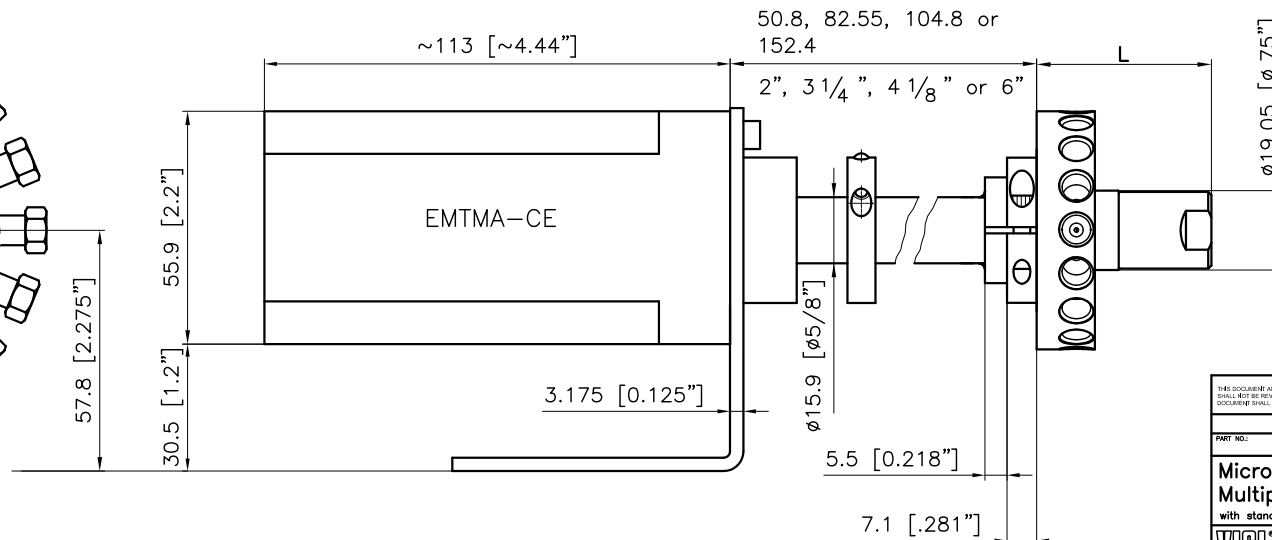
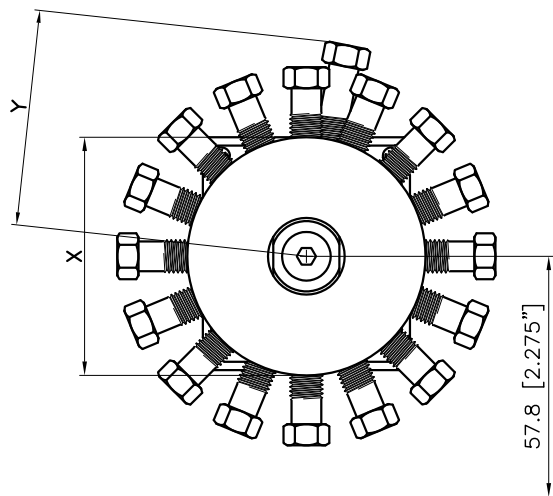


| | Valve Type | Connections | No. of Pos. | X | | Y | | L | |
|--|------------|-------------|---------------------|--------|--------|-------|-------|------|-------|
| | | | | mm | Inch | mm | Inch | mm | Inch |
| ONE OFFSET PORT  ONE ROW OF PORTS | CSD*MW | 1/16" | 4, 6, 8, 10, 12, 16 | ø38.1 | ø1.5 | ~34.5 | ~1.36 | 41.3 | 1.625 |
| | SD*MW | 1/8" | 4, 6, 8, 10, 12 | ø50.8 | ø2 | ~40.5 | ~1.60 | 41.9 | 1.65 |
| | SD*MW | 1/8" | 16 | ø57.15 | ø2.25 | ~51.0 | ~2.00 | 41.9 | 1.65 |
| TWO OFFSET PORTS  ONE ROW OF PORTS | CSC*MW | 1/16" | 4, 6, 8, 10, 12, 16 | ø41.3 | ø1.625 | ~36.0 | ~1.42 | 51.4 | 2.025 |
| | SC*MW | 1/8" | 4, 6, 8, 10 | ø50.8 | ø2 | ~38.5 | ~1.52 | 52.1 | 2.05 |
| | SC*MW | 1/8" | 12, 16 | ø57.15 | ø2.25 | ~43.0 | ~1.69 | 52.1 | 2.05 |
| ONE OFFSET PORT  TWO ROWS OF PORTS | CSF*MW | 1/16" | 4, 6, 8, 10, 12, 16 | ø41.3 | ø1.625 | ~35.0 | ~1.38 | 51.4 | 2.025 |
| | SF*MW | 1/8" | 4, 6, 8, 10 | ø50.8 | ø2 | ~39.5 | ~1.56 | 52.1 | 2.05 |
| | SF*MW | 1/8" | 12, 16 | ø57.15 | ø2.25 | ~43 | ~1.69 | 52.1 | 2.05 |
| TWO OFFSET PORTS  TWO ROWS OF PORTS | CST*MW | 1/16" | 4, 6, 8, 10, 12, 16 | ø41.3 | ø1.625 | ~35.0 | ~1.38 | 51.4 | 2.025 |
| | ST*MW | 1/8" | 4, 6, 8 | ø50.8 | ø2 | ~40.0 | ~1.58 | 52.1 | 2.05 |
| | ST*MW | 1/8" | 10 | ø57.15 | ø2.25 | ~43.5 | ~1.71 | 52.1 | 2.05 |
| | ST*MW | 1/8" | 12, 16 | ø61 | ø2.4 | ~51.0 | ~2.00 | 57.2 | 2.25 |



Dimension in mm [Inch]

| | | | |
|--|---|--|---|
| <small>THIS DOCUMENT AND THE INFORMATION WHICH IT CONTAINS SHALL NOT BE USED, EXPLOITED OR SOLD, AND SHALL NOT BE REPRODUCED OR TRANSMITTED IN ANY FORM OR BY ANY MEANS, ELECTRONIC OR MECHANICAL, INCLUDING PHOTOCOPYING, RECORDING, OR BY ANY INFORMATION STORAGE AND RETRIEVAL SYSTEM, WITHOUT THE EXPRESS WRITTEN PERMISSION OF VICI. THIS DOCUMENT SHALL REMAIN THE PROPERTY OF VICI AND SHALL BE RETURNED UPON DEMAND.</small> | | <small>Material:</small> <small>PROJECTION:</small> | <small>Dimension:</small> <small>DIMENSIONS:</small> |
| <small>Änderungen:</small> <small>MODIFICATIONS:</small> | <small>a) 07.09.09 FP #592, chg. table data Y</small> | <small>Projektion:</small> <small>PROJECTION:</small> | <small>Änderung:</small> <small>CHANGES:</small> |
| <small>PART NO.:</small> | <small>07.09.09 FP #592, chg. table data Y</small> | <small>Scale:</small> <small>SCALE:</small> | <small>Version:</small> <small>VERSION:</small> |
| Micro electric actuator Multiposition Valve <small>with standoff. General dimensions</small> | | <small>Scale:</small> <small>SCALE:</small> | <small>Version:</small> <small>VERSION:</small> |
| <small>Customer:</small> <small>KUNDE</small> | | <small>Scale:</small> <small>SCALE:</small> | <small>Version:</small> <small>VERSION:</small> |
| <small>Zeichnung Nr. / DRAWING NO.</small> 1-GE-5060.25 a | | <small>Scale:</small> <small>SCALE:</small> | <small>Version:</small> <small>VERSION:</small> |