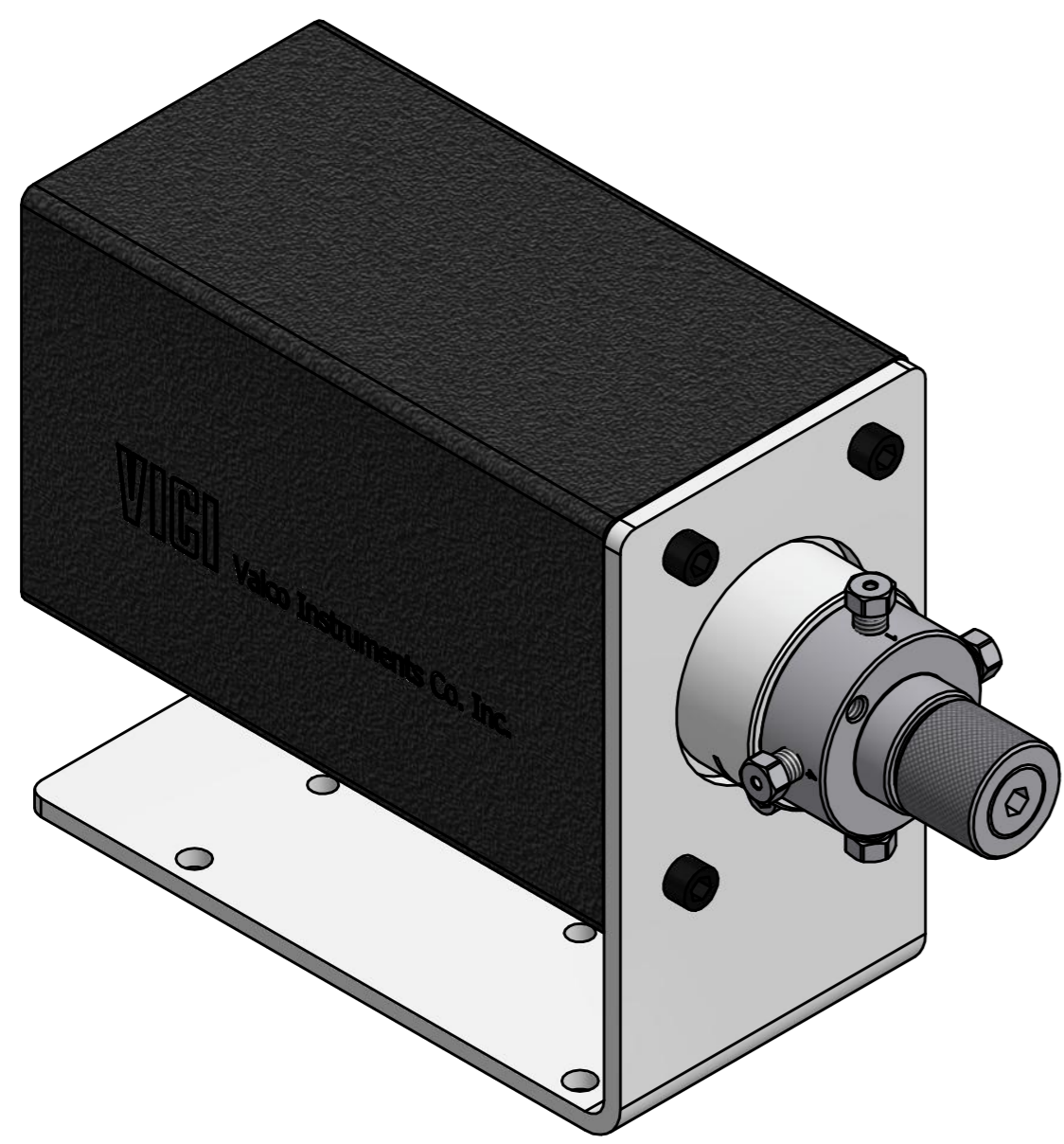


Dimension in mm [Inch]



SHOWN EUHAC4WE

Type	Connections	X		Y	
		mm	Inch	mm	Inch
W	1/32"	Ø25.4	Ø1.0"	~32	~1.25"
W	1/16"	Ø31.75	Ø1.25"	~44	~1.73"
UW	1/16"	Ø38.1	Ø1.5"	~49	~1.93"
UW	1/8"	Ø44.45	Ø1.75"	~57.4	~2.26"

THIS DOCUMENT AND THE INFORMATION WHICH IT CONTAINS SHALL NOT BE USED, EXPLOITED OR SOLD, AND SHALL NOT BE REVEALED OR DISCLOSED TO OTHERS WITHOUT THE EXPRESS WRITTEN PERMISSION OF VICI. THIS DOCUMENT SHALL REMAIN THE PROPERTY OF VICI AND SHALL BE RETURNED UPON DEMAND.

Aenderungen: a) 25.02.11 FP #652, added MTG-holes (4x) ECN 15894

Gezeichnet: 27.10.2010 F.P.  
 Geprüft / Freigegeben: 25.02.2011 FCo  
 CAD Nr.: 506382.idw

Unterverz.: KUNDE

Zeichnungs Nr. / DRAWING NO. **2 - GE - 5063.82 a**

Masstab SCALE: 1:1

Material: Material

Dimensionen DIMENSIONS

Projektion PROJECTION: 1st angle

Allgemein Toleranzen GENERAL TOLERANCES: SN EN 22768-1/ ISO 2768

Universal actuator with 2- pos. valve

VICI VICI AG International, CH-6214 Schenkon