



Using Valco Electric Actuators with Sciex Analyst® Software

Sciex Analyst LC-MS/MS acquisition software for TripleQuad and QTRAP instruments is fully compatible with Valco two-position microelectric actuators. Serial and USB versions of the Valco universal electric actuators in two position mode can also be used, but must first be configured to a legacy mode which emulates microelectric actuator behaviors and responses.

1. Microelectric actuator

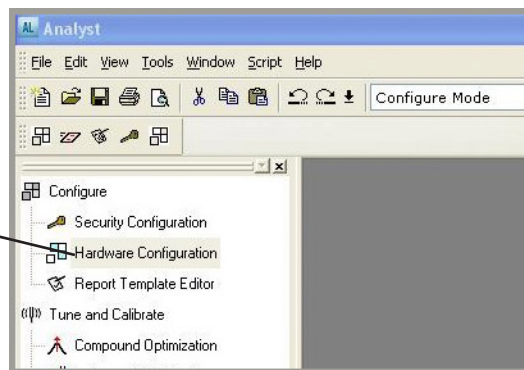
Initialize the actuator as described in Technote 413a, available in the support section of vici.com.

Universal actuator

- A. Make sure that the actuator is set for Two Position with Stops. If necessary, refer to the Universal Actuator Manual supplied with your actuator or available for download in the support section of vici.com.
- B. Configure the actuator for operation in legacy mode as described in Technote 429, available in the support section of vici.com.

2. Once the actuator has been prepared and connected to the appropriate port on the computer, open the Analyst software and double-click **Hardware Configuration** to open the Hardware Configuration window.

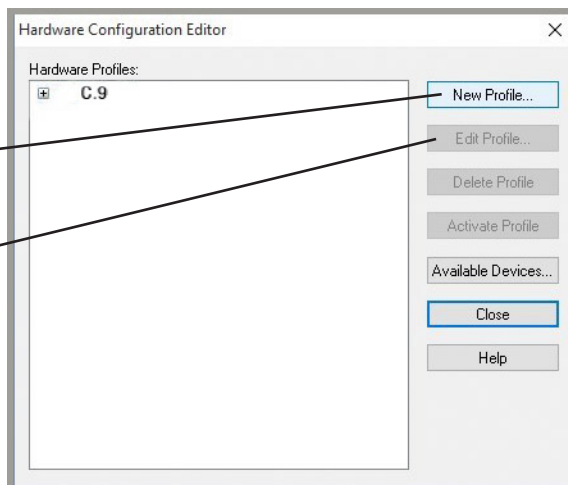
DOUBLE-CLICK
HARDWARE CONFIGURATION



3. In the Hardware Configuration window, click **New Profile**, or modify an existing profile by selecting one from the list and clicking **Edit Profile**.

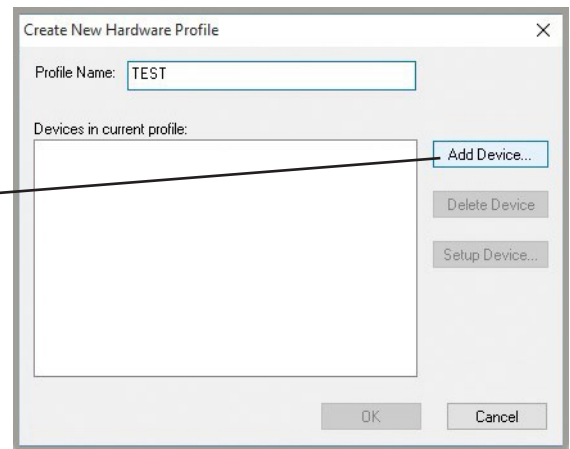
CLICK HERE TO CREATE
A NEW PROFILE

OR SELECT A PROFILE
FROM THE LIST AND
CLICK HERE TO MODIFY IT



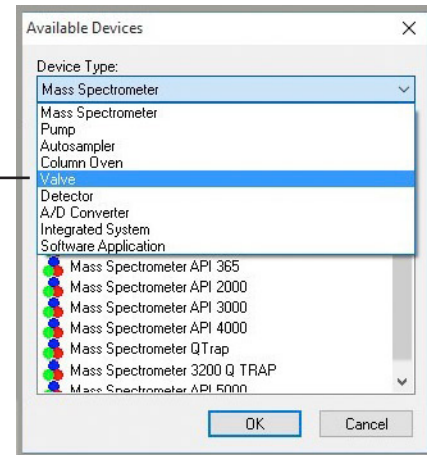
4. Click **Add Device** in the Create New Hardware Profile window.

CLICK HERE TO TO
OPEN A LIST OF
AVAILABLE DEVICES



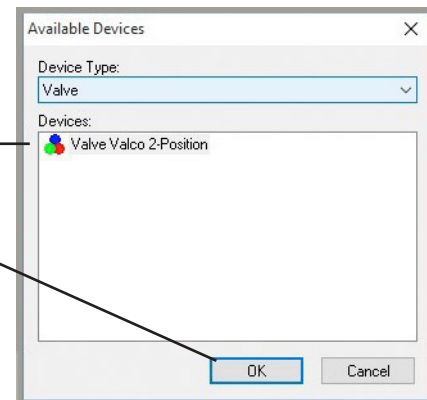
5. In the Available Devices window, select **Valve** from the Device Type pulldown menu.

SELECT VALVE FROM
THE PULLDOWN MENU



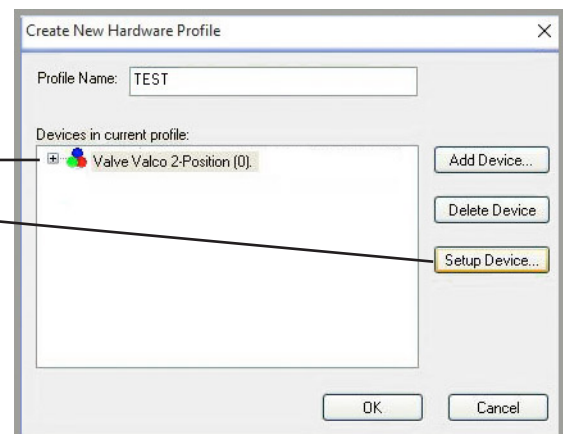
6. Select **Valve Valco 2-Position** from the list of Devices, and click **OK** to return to the Create New Hardware Profile window (*bottom right*), which now contains Valve Valco 2-Position.

SELECT
VALVE VALCO 2-POSITION,
THEN CLICK OK

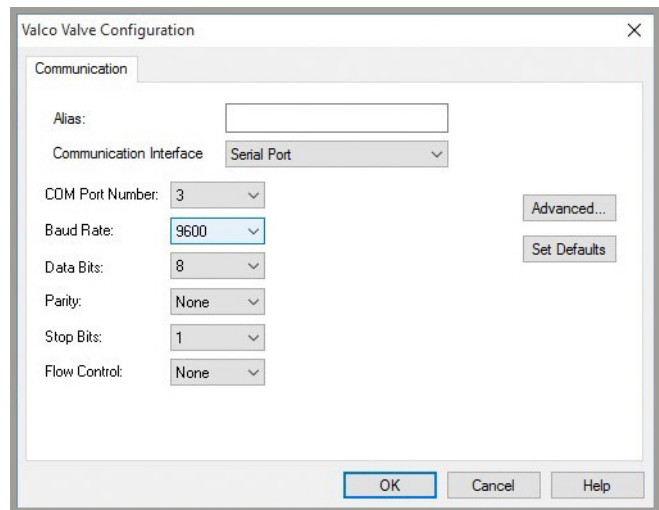


7. Select **Valco Valve 2-Position** from the list of Devices in current profile, then click **Setup Device**.

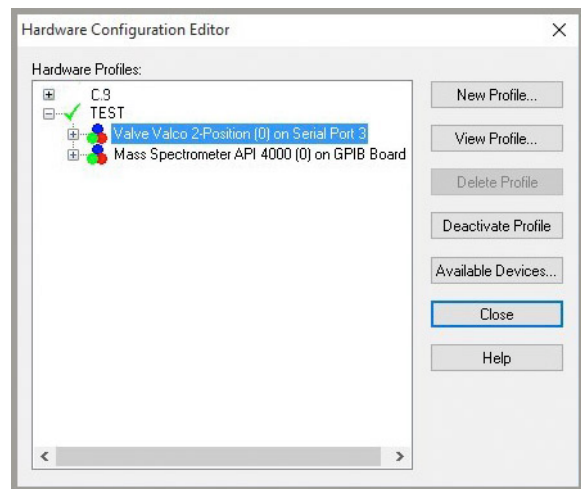
SELECT
VALVE VALCO 2-POSITION,
THEN CLICK SET UP DEVICE



8. In the Configuration window, adjust your settings for COM Port number, Baud Rate, etc. as required and click OK.



9. On the next screen, click **Activate Profile** and a green check mark will appear next to the profile name, as shown at right.



North America, South America, and Australia/Oceania contact:

VICI Valco Instruments Co. Inc.
P.O. Box 55603
Houston, TX 77255
Sales: (800) 367-8424
Tech: (713) 688-9345
Fax: (713) 688-8106 valco@vici.com

Europe, Asia, and Africa contact:

VICI VICI AG International
Parkstrasse 2
CH-6214 Schenkon
Switzerland
Phone: +41 41 925 6200
Fax: +41 41 925 6201 info@vici.ch
Cheminer[®] and VICI[®] are registered trademarks of Valco Instruments Co. Inc. and VICI AG

TN-428 6/16